

Show File for Windows

Show File for Windows - A simple file viewer for Windows 3.1 and beyond.

What is [Show File for Windows?](#)

What about [using Show File for Windows?](#)

More about [Search.](#)

Help with [Open.](#)

How do I change a [font?](#)

Is there any [interface information](#) that might help me use Show File for Windows more effectively?

[About](#) this software.

Show File Windows - Overview

Show File for Windows is a simple application that allows you to view files in the Windows Operating Environment. Generally it is used to review text files, search for information in them or print them. It is a simpler way to view than shelling out to DOS or generally using one of the editors Write or Notepad provided with Windows.

Show File for Windows is exactly that, a show utility, it performs printing and font changes, search and line movement, however it does not provide any editing capabilities. Show File for Windows will allow a maximum of 32,256 lines of text from a file each having a maximum length of 256.

Show File for Windows was written by Eric Heverly (erichev@ix.netcom.com) of Red-Eye Computer Services using Borland's Delphi-Desktop Version 1.0 Development System. The concept for Show File for Windows came from Show File for DOS from QuicSoft Software Company originally copyrighted in 1987. At this point I am unaware of any plans for future upgrades to the Windows Platform so I wrote my own version which I am releasing into the public domain. Please see the [About](#) for more information regarding release information.

Using Show File for Windows

It is really pretty simple to use, you select File -- Open from the Menu, select a file to view and the file is displayed. If you need to you can change the font or print the file. Use the search utility to provide quick searches for needed information.

Key strokes - The following are the responses for keystrokes:

F1 or Page Down	Page down
F2 or Page Up	Page up
F3 or Ctrl+Home	Top of document
F4 or Ctrl+End	Bottom of Document
End	End of current line
Home	Beginning of the current line
Down arrow	Down 1 line
Up Arrow	Up 1 line
Ctrl + O	Open a File
Ctrl + C	Clear the Screen
Alt + F4	Exit
Ctrl + G	GoTo a line number
Ctrl + F	Find
Ctrl + U	Set Font Size to 8 Point
Ctrl + D	Set Font Size to 7 Point

Search

Using search is simple, select Search - Find from the Menu, enter the text you are looking for and press enter, the search engine will allow you to continue searching through the document, the data found will display at the top of the window as the first line of text, highlighted in **Blue**.

Match case option - when checked will exactly match the case of the word you are looking for, when off it will find the word regardless of case.

Direction - **up** - searches backward through the file.

Direction - **down** - searches forward to the end of the file.

Open

Open uses the standard Windows Open Dialog. You can select any text file or select List Files of Type and change to Report Files, or All Files. This will allow you to select any file type and display it.

Caution: Selecting Binary file types will display the Binary representation of the file, which means you will not see very much.

Font

There are two methods of changing the font.

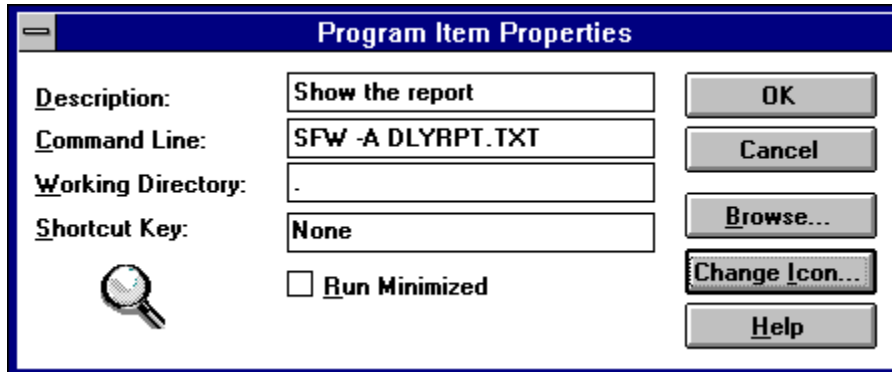
First you can use the font dialog under the Menu Item "**File**" and "**Font**". This will allow changing the font anyway you like.

The second is to use the "**Font Up**" or "**Font Down**" option under the Menu Item "File". This changes the Font Point Size from 7 point to 8 point and back, depending on the state of the current font. This provides some flexibility when viewing ANSI formatted files. This can also be accessed via the hot keys "**Ctrl+U**" and "**Ctrl+D**".

Interface Information

Show File for Windows (SFW) has the ability to interperate functionality in **three** ways.

First you can place a file name on the command line when calling this application, it will respond by automatically opening the file and presenting it to the user. There is a switch that is available here, and that is the **-A** switch. It's purpose is to present a file with ANSI Carriage Control (ie. a 1, 2, -, or space in the first byte of each record). It will remove the first character of each line in the file automatically, double and tripple space as necessary, it will not underline an item as a printer would though. Example:

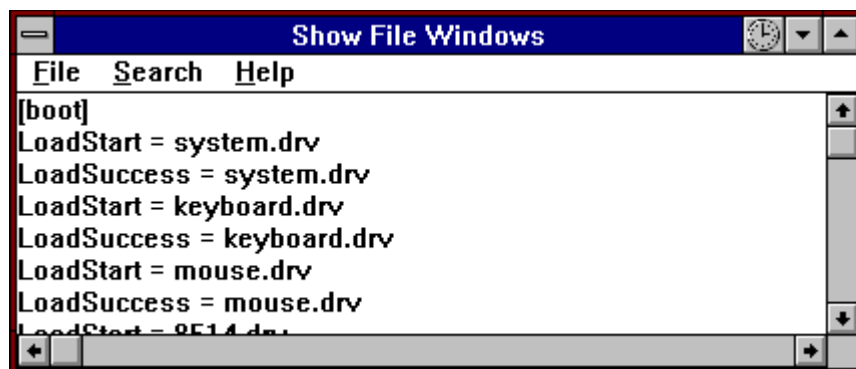


Second is the drag-and-drop feature, you can drag a file name from the File Manager onto the application and SFW will respond by opening that file.

Third is the DOS interface. Here you simply need to create a SFW.INI file in the Windows directory and SFW will open the file named in it. Here is an example of the SFW.INI file:

```
[File]
SFW=C:\WINDOWS\BOOTLOG.TXT
```

Note that **you** must **delete** the SFW.INI file, otherwise SFW will always open the same file. Now when SFW starts up, it might look something like the following:



About

Show File for Windows is **Freeware**. You may use it or the source code as long as you give the following people credit for their efforts:

- **Eric Heverly** Developer of ShowFile for Windows, Copyright 1995 - Freeware!
- **Gerry Skolnik** Developer of TBigText, Copyright 1995 - Freeware.
- **Danny Thorpe** Developer of the Scroll Bar Code.
- **QuicSoft Software** Developer of the DOS version, Copyright 1987.

No warrenties written or implied are given with this software. It is "**Use at your own Risk**", in any environment.

Software bugs should be sent to: erichev@ix.netcom.com

Fonts

There are two methods of changing the font.

First you can use the font dialog under the Menu Item "File" and "Font". This will allow changing the font anyway you like.

The second is to use the "Font Up" or "Font Down" option under the Menu Item "File". This changes the Font Point Size from 7 point to 8 point and back, depending on the state of the current font. This provides some flexibility when viewing ANSI formatted files.

